

ARTEFACTS



Friends of
Birmingham
Museums

AUTUMN 2022 • ISSUE 70

BAfM

MEMBER OF THE BRITISH
ASSOCIATION OF FRIENDS
OF MUSEUMS

FRIENDS OF BIRMINGHAM MUSEUMS MAGAZINE



PETER KENNARD, HAYWAIN, 1980 © PETER KENNARD, PHOTO: TATE

Radical Landscapes

Mead Gallery

Fri 7 Oct – Sun 18 Dec

Radical Landscapes reveals a never-before told social and cultural history of Britain. It will feature over 100 works by leading modern and contemporary artists including Hurvin Anderson, Tacita Dean, Jeremy Deller, Derek Jarman, Peter Kennard, Henry Moore, Ingrid Pollard and Veronica Ryan.

Radical Landscapes is organised in collaboration with Tate Liverpool.

The exhibition is curated by Darren Pih, Exhibitions and Displays Curator, Tate Liverpool, Laura Bruni, Assistant Curator, Tate Liverpool and Thomas Ellmer, Exhibitions Curator, Mead Gallery.

Opening Times Tue – Sun 11am – 8pm

FREE ENTRY

Warwick Arts Centre, The University of Warwick, Coventry CV4 7AL

@warwickarts @warwickarts warwick arts centre





'Meeting of the Birmingham Political Union' by Benjamin Robert Haydon, 1832-33; 1937P370; Presented by the Friends of Birmingham Museums & Art Gallery, 1937; Photo by Birmingham Museums Trust, licensed under CC0

CONTENTS

CHAIR'S OBSERVATIONS	04
FRIENDS' EVENTS	06
NEWS FROM THE OFFICE	10
NEWS FROM THE VOLUNTEERS	11
HELLO FROM BIRMINGHAM MUSEUMS	12
CANALETTO: A VENETIAN'S VIEW	13
CHANGING BIRMINGHAM - ITS PEOPLE AND PLACES: FINDING A VOICE	14
COVENTRY CITY OF CULTURE	16
THE LAUNCH OF THE FRIENDS' ACQUISITIONS DATABASE	18
QUINTON LOCAL HISTORY SOCIETY'S 'H.R. WILSON'S QUINTON STORY'	19
WOMEN ARTISTS OF THE ROYAL BIRMINGHAM SOCIETY OF ARTISTS, 1884 - 2012	20
BIRMINGHAM MUSEUMS - WHAT'S ON	22
IN THE AREA	26
FRIENDS' QUIZ	34
FRIENDS' DIARY	35

CONTACTS

PETER MILES
CHAIR
Email: committee.fbmag@gmail.com

SARAH FARNAN
MEMBERSHIP SECRETARY
Email: fbmagmembership@gmail.com

MELISSA HUGHES
ADMINISTRATOR AND ARTEFACTS EDITOR
Email: melissa.page.fbmag@gmail.com

JANE HOWELL
EVENTS ORGANISER
Email: friendsofbmag@gmail.com

FRIENDS' OFFICE
Friends of Birmingham Museums & Art Gallery
Soho House Museum, Soho Avenue,
off Soho Road, Birmingham, B18 5LB
Tel: 0121 348 8330
Website: www.fbmt.org.uk
Reg. Charity No. 528895

DESIGNED AND PRODUCED BY
PW MEDIA & PUBLISHING LTD

GRAPHIC DESIGN
PAUL BLYTH

PRINTED BY
STEPHENS & GEORGE

ADVERTISING SALES
JO WILLIAMS
Email: jo@pw-media.co.uk
Tel: 01905 727902

ON THE COVER

'Cyclamen' by Florence Engelbach, 1931,
Presented by the Friends of Birmingham Museums
& Art Gallery, 1932, 1932P238, Photo by
Birmingham Museums Trust, licensed under CC0.

This painting was one of three items purchased at
the first General Meeting of the Friends, which was
held on Wednesday 1st July 1931 (see page 18)





MOVING FORWARD

BY PETER MILES



The Friends Committee at our Away Day at Blakesley Hall

I am always surprised by how quickly the deadlines for 'Artefacts' come around when Melissa quietly but firmly reminds me that my copy is required very soon. Then, of course, one has to decide what to write about. My inspiration for this edition is that, at a recent Committee Meeting, we decided to hold an 'Away Day' to talk about the future of the Friends and to consider our ambitions and plans for the next decade. And, as we have a number of new Committee Members, we used the opportunity to get to know each other a little better too!

We met in June at Birmingham Museums Trust (BMT)'s wonderful Tudor Manor - Blakesley Hall in Yardley – on a beautifully warm sunny day. We engaged an excellent Facilitator, Vanessa Swann who kept us in order, directed our discussions and marshalled our thoughts. We found it to be a very worthwhile exercise and we hope that the decisions which came out of our conversations will bolster, develop and encourage the Friends.

Lockdown was a difficult time for both the Friends and for BMT, as it was for a lot of organisations. Some have not survived. But thanks to the dedication of Lynda throughout the pandemic, Melissa on her return from maternity leave, and the support of our Committee, we have kept going. Melissa continues to edit 'Artefacts' and provides tremendous organisational support, Lynda looks after our finances and Sarah is our very capable and effective Membership Secretary.

With the forthcoming closure of Birmingham Museum and Art Gallery for essential electrical upgrade work we recently had to

move office, and we now have a new home at Soho House, the Georgian residence of Matthew Boulton. The move went well, we have settled comfortably into our new home and we have kept the same telephone number, which we were able to move with us!

I am particularly pleased by the restoration of the Friends Events programme, led by Jane Howell and supported by Sarah and Lynda's excellent administrative skills. In this current edition of 'Artefacts' we have an impressive line-up of events: BMT has arranged for the Friends to meet the Trust's Co-CEOs, Sara Wajid MBE and Zak Mensah, on Wednesday 21 September; we have a weekend away in Copenhagen from the 23-26 September 2022; and two of our Trustees - Peter Baker and Judith Hurst - have organised events in addition to a number of events lined up by Jane herself (details are on pages 6-8). In addition, Jim Wells is currently organising a celebrity lecture, for which we hope to engage a TV celebrity, so do look out for more on this in due course!

As part of Heritage Open Week, the Birmingham & Midland Institute are organising an Open Day on Saturday 17 September. The Friends will be taking a stand to promote who we are and the work that we do. Please pop in and say hello – and don't forget that you can get 10% off in the café at the BMI on the production of your Friends Membership Card!

I hope you will agree that, after a difficult period during the pandemic, the Friends are emerging with strength, enthusiasm and vitality. The Committee and I want to thank you, our loyal Members, for your continued and invaluable support. ■

The Friends new office is at Soho House Museum



Surprising and delightful

Discover 250 years of colourful stories through the world's largest collection of Worcester porcelain

- Enjoy entertaining talks or demonstrations
- Treat yourself to refreshments served on Royal Worcester china
- Get creative with our NEW Paint-Your-Own-Pottery activities

Book ahead to make your group visit special!

www.museumofroyalworcester.org/groups
or call 01905 384652

Museum of Royal Worcester, Severn Street, Worcester WR1 2ND



'Royal Worcester' and the C51 crown device are registered by and used under kind permission from Portmeirion Group UK Ltd to whom all rights are reserved.



Memory Drop #5 Young ha Park

INTERNATIONAL
FESTIVAL
OF GLASS
26-29 AUGUST 2022



EXPANDING HORIZONS

KOREA • JAPAN • CHINA • TAIWAN

■ 26 - 29 AUGUST 2022

Four days of dynamic and dazzling glassmaking by over 500 of the world's greatest glass artists. Masterclasses, workshops, exhibitions, performances and presentations to celebrate the UN International Year of Glass

■ INFORMATION AND VENUES

ifg.org.uk | ifg@rmlt.org.uk | @IFoG2022

Stourbridge Glass Quarter, Wolverhampton Art Gallery
School of Art, University of Wolverhampton

FRIENDS' EVENTS

HOW TO BOOK EVENTS – EITHER BY EMAIL OR BY POST

BY EMAIL

Send an email to friendsofbmag@gmail.com listing: all the events you would like to go to, how many tickets you would like for each event, and whether the tickets are for members or non-members. Please include your membership number if applicable.

You will be sent an email reply and information about how to pay for the events by bank transfer. Once the bank transfer has been received you will receive a further email confirming your booking.

BY POST

Write to us including: all the events you would like to go to, how many tickets you would like for each event, and whether the tickets are for members or non-members. Please include your membership number if applicable.

Please work out the total amount due and send a cheque, made payable to 'FBMAG', to our new address: Friends of Birmingham Museums and Art Gallery, Soho House Museum, Soho Avenue, Birmingham, B18 5LB. Please enclose a stamped addressed envelope so we can issue you with your ticket(s) and confirm your booking(s).



'FOUND CITIES, LOST OBJECTS: WOMEN IN THE CITY' CURATED BY LUBAINA HIMID CBE

Dates: Wednesday 24 August or Thursday 25 August 2022,
10:45am for an 11am start

Speaker: Katie Morton, Exhibitions Team Leader,
Birmingham Museums Trust

Cost: £10 members / £14 non-members

[NB. This event was advertised in the Summer 2022 edition of 'Artefacts'. If you have already applied to attend this event, please do not reapply.]

Join Katie Morton, BMT's Exhibitions Team Leader, for a guided tour and a friendly chat about the new Gas Hall exhibition 'Found Cities, Lost Objects: Women in the City'. This is a national touring exhibition from the Arts Council Collection curated by Turner Prize-winning artist and cultural activist Lubaina Himid CBE, which explores modern city life from a female perspective. Encouraging visitors to view the city through a woman's eyes, 'Found Cities, Lost Objects' addresses themes ranging from safety and navigation to concepts of belonging and power. For the exhibition, Himid has brought together a group of works that address these themes, questioning our understanding of the urban environment and encouraging a rediscovery and reclaiming of our cities.

'Found Cities, Lost Objects' features over 60 modern and contemporary artworks, including painting, sculpture,

photography and film from both the Arts Council Collection and Birmingham's collection. The exhibition runs from 14 May – 4 September 2022.



FRIENDS' ANNUAL GENERAL MEETING

Date: Tuesday 13 September 2022, 10.15am for an 11am start

Venue: Birmingham and Midland Institute, 9 Margaret Street,
Birmingham, B3 3BS

The Friends' AGM will be held at the Birmingham and Midland Institute on Tuesday 13 September at 11am. We would like to invite you to join us for tea and coffee from 10.15am. The AGM will be held in the Lyttelton Theatre. Please make sure to put this important date in your diary. It will give you the opportunity to hear the latest news from the Friends and to ask any questions you might have. After the AGM Colin Hutcheson, BMT's Planetarium Lead, will talk about the Planetarium at Thinktank (see details below).

We do not charge for the AGM and so if you wish to make a donation towards the costs of the meeting prior to the event please do send them to us. Donation plates will also be available on the day. It is important that we know numbers for catering and quorum purposes so please email friendsofbmag@gmail.com or write to us at our Soho House address above to RSVP or if you have any questions. We very much hope to see you there.

NB. More details about the AGM will be appearing in the Friends Committee Report and Financial Statements, which will be sent to you by post shortly.



THINKTANK'S PLANETARIUM: THE INSIDE STORY

Date: Tuesday 13 September 2022, 12noon – following on
from the Friends AGM (see details above)

Venue: Birmingham and Midland Institute, 9
Margaret Street, Birmingham, B3 3BS

Speaker: Colin Hutcheson, Planetarium Lead,
Birmingham Museums Trust

Cost: Free for attendees of the Friends AGM

Thinktank Planetarium first opened its doors to the public in December 2005. Since then, it has welcomed over 1.2million visitors and underwent a major refurbishment in 2019. Colin Hutcheson, Planetarium Lead, will talk about the work he does managing the facility, and some of the new projects and collaborations he is working on to expand the reach of the Planetarium.



TOLKIEN WALK

Date: Thursday 15 September 2022, 11am

Venue: Sarehole Mill, Cole Bank Road, Hall Green,
Birmingham, B13 0BD.

EVENT KEY



ANNUAL EVENT



DAYTIME TALK



EVENING EVENT



GUIDED TOUR



OUTING



SCIENCE SHORT

Meeting Point: Meet in the courtyard at Sarehole Mill at 11am (opening time) for an 11.15am start.

Leader: Ben Nicholls, a member of the Sarehole Mill staff

Cost: £10 members / £14 non-members

NB. Remember to bring your Friends membership cards as Friends have free entry. There is a small car park and on road parking is possible. Buses 11 and 5 stop close by.

In 1896, after the death of his father, a young boy called Ronald, his mother Mabel and younger sibling Hilary moved back from South Africa to stay with their extended family in Sarehole on the outskirts of the industrial city of Birmingham. However, in stark contrast to the City of 1000 trades, Sarehole was still part of rural Worcestershire, deep in the countryside and surrounded by floral meadows and dense woodland.

Directly opposite the house where Ronald lived stood a water mill with a large pond populated with fish, swans, and all sorts of wildlife. He and his brother would play in and around this pond whenever they could, much to the annoyance of the resident miller who would yell at them for trespassing whilst covered head to toe in flour, thus earning himself the nickname of "the white ogre".

These idyllic childhood surroundings, plus the children and adults he encountered, inspired the imagination of young Ronald whose full name was John Ronald Reuel (JRR) Tolkien. Middle Earth, the imaginary world Tolkien created in his 'Hobbit' and 'Lord of the Ring' books, was based firmly on his childhood memories of Sarehole Mill and the fields and dells all around him. During this 1 hour ramble we will walk in some of the footsteps of the young Tolkien and discover not only what inspired the Shire, but also how the smouldering furnaces of Birmingham became Mordor and how he created the race of small people whom he called the hobbits.



A CONVERSATION WITH BIRMINGHAM MUSEUM TRUST'S CO-CEOS, SARA WAJID MBE AND ZAK MENSAN

Date: Wednesday 21 September 2022, 2-3.30pm

Cost: Free

Venue: Waterhall, Birmingham Museum & Art Gallery

A special event for Friends and Patrons. We will share insights, anecdotes and our future plans for Birmingham Museums. You will have the opportunity to ask questions and to chat with other attendees. Refreshments will be provided.

NB. To book your place, please email development@birminghammuseums.org.uk.



FRIENDS' INTERNATIONAL HOLIDAY TO COPENHAGEN

Dates: Friday 23 September – Monday 26 September 2022

Cost: £842 per person sharing a room; Single room supplement £220 (includes breakfast, return flights from Birmingham by Scandinavia Airlines, hotel transfers in Copenhagen and entrance fees where stated). **Deposit:** £100 per person.

Copenhagen has a cosy, easy-going charm, a friendly population and an environmentally friendly focus, aiming to be carbon neutral by 2025. Experience a capital city which feels like a small town and is packed with art and architecture. We will be



Above: Zak Mensah & Sara Wajid
Co-CEOs of Birmingham Museum Trust

staying for three nights at the central Hotel Hebron on a bed and breakfast basis.

Friday: We will meet at Birmingham airport and will be taking a mid-morning flight, arriving just after lunch. Friday afternoon walking to get our bearings and visiting the Tivoli Gardens (Entrance not included).

Saturday: Rosenborg Castle in the morning and an afternoon visit to Amalienborg, home to Queen Margarethe (Entrances included).

Sunday: A morning visit to Ny Carlsberg Glyptotek (Entrance included) and then free for the rest of the day. The National Museum and Christiansborg Palace are a stone's throw away.

Monday: Flight back to Birmingham.

Whilst in Copenhagen, we hope to meet up with some Danish Friends Organisations.



THE NEW ART GALLERY WALSALL

Date: Thursday 6 October 2022, 2pm

Venue: The foyer of the Art Gallery at 1.50pm for a 2pm start.

Cost: £10 members / £14 non-members

By car: The New Art Gallery, Walsall, Gallery Square, WS2 8LG.

There is no parking at the Gallery itself, but local parking is available at the Crown Wharf Retail Park, Frederick Street car park, Station Street and the Saddlers Centre.

By train: frequent service from Birmingham New Street - 5 min walk to the gallery.

A chance to visit one of the newer galleries in the West Midlands, which opened in 2000. The gallery is home to the Garman Ryan Collection, gifted to the people of Walsall by Lady Kathleen Garman (widow of Sir Jacob Epstein) and her friend Sally Ryan. One of the gallery curators will tell how Walsall was given this wonderful collection and show us the highlights during a 30 minute tour. You will then have plenty of time to explore on your own.

Refreshments are available for purchase at Costa Coffee on the ground floor before or after your tour.

NB. This visit is limited to 20 people. A second visit will be arranged if necessary.

CONTINUED OVER THE PAGE



'SOMETHING OLD, SOMETHING NEW, SOMETHING BORROWED, SOMETHING BLUE!'

Dates: Wednesday 12 October or Friday 21 October 2022, 11am

Tour Guide: Jane Howell

Cost: £10 members / £14 non-members

Venue: Round Room, BMAG

Meeting Point: The Vestibule at top of the stairs at 10.45am for an 11am start

I wonder how many of you shared the anxiety which I felt as rumours circulated about what would be going up in the Round Room for the Museum's partial reopening on 28th April?

The Round Room has been hung in the same way, reflecting the art of the time, since the Museum opened on the 28th November, 1885. Move forward 145 years and the art no longer reflects the art of its time. Instead, it reflects the art of Victorian England.

However, the new hang does not reject previous ages. Instead, it is a delightful combination of art which is somewhat older than the Victorian Era, right through to art that reflects both the time we live in and the city in which we live, hence the title 'We are Birmingham!'

As I looked at the display for the first time, my anxieties vanished. Here was something exciting and dynamic. I didn't like all of it, but no-one ever will. As I looked around me, a tour leapt into mind: there's something old, but there's something new. A brief pause whilst I asked Emalee Beddoes-Davis if there was anything borrowed. "Yes", she said. "Most certainly." Something Blue was easy.

Whilst the new display has been received with mixed emotions, I ask you all to give 'We are Birmingham' and the Round Room rehang a chance.

This exhibition will be coming down at the end of the year. And we will have to wait and see what appears once the rewiring is completed, hopefully in 2024. We must wait until then to judge what goes up at that point!



VISIT TO THE WEST MIDLANDS POLICE MUSEUM

Date: Thursday 10 November 2022, 11am

Venue: West Midlands Police Museum, The Lock-up, Steelhouse Lane, Birmingham, B4 6BJ (Opposite the Children's Hospital).

Disabled access via Coleridge Passage – lifts and ramps available)

Cost: £15 members / £19 non-members

Discover what it was really like to spend time on both sides of the bars in West Midlands Police Museum, a Victorian lock-up that was built in 1891 and remained a working police cell block until 2016. Transport yourself back in time to learn about two centuries of policing history: find out about policing pioneers, the people who worked in the lock-up, and the police officers who made the ultimate sacrifice – those who fought in the world wars and those who died carrying out their duty. Discover what life was like for those who stepped through the lock-up's doors. Some of Birmingham's most notorious criminals were held at the lock-up, including the real Peaky Blinders. The visit includes refreshments and a talk on the history of the lock-up.



'EVIE: A TWENTIETH CENTURY WOMAN'

Date: Tuesday 15 November 2022, 11am

Venue: Winterbourne House and Gardens, 58 Edgbaston Park Road, Edgbaston, Birmingham B15 2RT

Speaker: Henrietta Lockhart, Collections Officer, Winterbourne House

Cost: £10 members / £14 non-members (NB. The entrance fee is separate as many members of the Friends are also members of Winterbourne. For those who aren't, please pay at reception: Adults: £8.20; Over 65s: £7.20)

Meeting Point: The reception in Winterbourne at 10.45am for an 11am start

How to get there: By car from city centre: Along the Bristol Road, turn right into Edgbaston Park Rd and then past the University. Winterbourne is on the right. There is a 50 space car park and 2 blue badge spaces beside the house. By bus: The X21 and X22 buses stop just round the corner from Winterbourne. They pick up from the city centre by Moor Street station. More details about frequency and other stops can be found at the National Express website: www.nxbus.co.uk

As chair of the Birmingham Museum and Art Gallery Committee in 1955, Evelyn Crosskey (née Nettlefold) led on the purchase of Henry Moore's sculpture 'The Warrior'. Who was she, and what did this choice of artwork say about the principles that guided her life? This talk will use archival material held at Winterbourne House and Garden to explore the life and personality of a woman who lived through wars and profound social upheaval, and played her part in changing the world for the better.

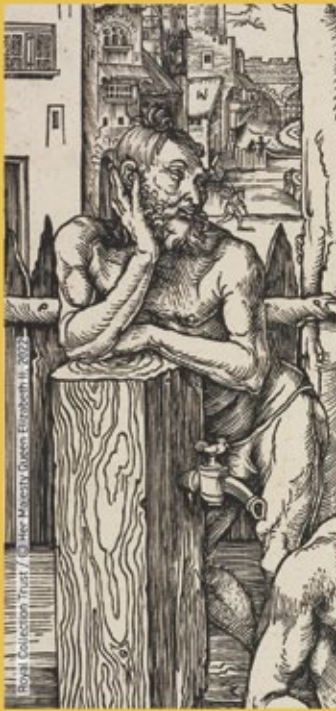
DATES FOR YOUR DIARY



Wednesday 14 December 2022: Christmas Party and talk by Dave Symons – 'Matthew Boulton and the Forgers' at Soho House



Above: Fingerprinting at West Midlands Police Museum



DÜRER

— THE MAKING OF A
RENAISSANCE MASTER —

17 JUNE — 25 SEPTEMBER 2022

In association with



PAYING RESPECTS

8 July 2022
— 25 June 2023



MONEY &
MORTALITY

THE
BARBER
INSTITUTE OF
FINE ARTS

FREE ADMISSION

Tuesday – Sunday,
10am – 5pm (closed Monday)



@BarberInstitute
www.barber.org.uk

Visit by train: University station



UNIVERSITY OF
BIRMINGHAM

elijah



Nov 5 2022 7.30
Birmingham Festival Choral Society
Central England Ensemble
Conductor - David Wynne

Tickets £14 from www.bfcs.org.uk or on the door.
The Ruddock Performing Arts Centre, King Edward's School, B15 2UA

NEWS FROM THE OFFICE

DEAR NON-MEMBERS

We hope you are enjoying reading this Autumn 2022 edition of 'Artefacts' – the Friends of Birmingham Museums' quarterly magazine. 'Artefacts' is posted to all Friends Members, but is also now distributed to galleries, museums, libraries and shops across the West Midlands and so we are aware that some of our readers may not (yet!) be Members, but might have picked up a copy in their local library, or had it passed on to them by a friend.

And so if you aren't a Member, if you are enjoying this magazine and the selection of articles, and if you are interested in the events we have on offer then becoming a Member of the Friends of Birmingham Museums might be for you!

Since we were founded in 1931, our key objective has been to support Birmingham Museums & Art Gallery. Ninety-one years ago the Keeper of the Gallery wrote: 'I am hoping that we may get together a very large number of small subscriptions, and I am proposing that these subscriptions should be made payable to: the Friends of the Gallery Fund Account.' An alliance of subscribers wanted to make their own independent contribution to the City Council-owned Museum – and this is still our vision today.

Joining the Friends will give you the following benefits (terms and conditions apply):

- Free entry to Birmingham Museums' Historic properties: Soho House, Sarehole Mill, Blakesley Hall, Aston Hall and Museum of the Jewellery Quarter
- 'Artefacts' magazine, which is published quarterly, and the Friends' E-Newsletter
- The opportunity to join the Friends' social events and outings
- Discounts in the shops and cafés at BMAG and the Historic properties
- 50% entrance discount to Thinktank, Birmingham Science Museum at Millennium Point: www.birminghammuseums.org.uk/thinktank
- 10% discount at the Birmingham and Midland Institute's Coffee Lounge on production of a valid Friends membership card
- 10% discount off purchases in both the shop and the café at Potteries Museum & Art Gallery and Gladstone Pottery Museum: www.stokemuseums.org.uk

Many of you will know that, with the closing of the offices in Birmingham Museum & Art Gallery for essential electrical upgrade work, we have been on the lookout for a new Friends office. In May we were delighted to move to our new office in Soho House Museum, one of Birmingham Museums Trust's Historic Properties and the Georgian home of the Birmingham industrialist, Matthew Boulton. Please send post to us at our new address: Friends of Birmingham Museums and Art Gallery, Soho House Museum, Soho Avenue, Birmingham, B18 5LB.

GIFT MEMBERSHIP

Gift membership is available all year round and includes 3 extra months free. A Gift Membership form can be downloaded at: www.fbmt.org.uk/subscriptions/.

Alternatively, you can use the standard application form in this magazine. Complete the form with the recipient's details and send it with a covering note giving your own name and contact details.

NEW MEMBERS

A warm welcome is extended to our new Members: Mrs Jennifer Campbell, Mrs Marjan Thorneycroft and Dr Georgina Bond; and a welcome back to Gary Joiner and Stephen Wood who have re-joined the Friends!

FRIENDS OF BIRMINGHAM MUSEUMS APPLICATION FORM

Title:	
Full Name:	
Address:	
Tel:	Mobile:
Email:	
Where did you pick up this copy of 'Artefacts'?:	

☐ I enclose a cheque for £ or ☐ I have transferred £ to

Please sign below and send to: Friends of Birmingham Museums & Art Gallery, Soho House Museum, Soho Avenue, off Soho Road, Birmingham, B18 5LB, together with your cheque (if applicable) made payable to 'FBMAG'



Boost your membership subscription/donation by 25p of Gift Aid for every £1 you donate. In order to Gift Aid your donation you must tick this box: ☐ I want to Gift Aid my donation of £ and any donations I make in the future or have made in the past 4 years to Friends of Birmingham Museums (trading as FBMAG). I am a UK taxpayer and understand that if I pay less Income Tax and/or Capital Gains Tax than the amount of Gift Aid claimed on all my donations in that tax year it is my responsibility to pay any difference.

Signature:	Date:
------------	-------

DATA PROTECTION Your details are held securely by the Friends Office for administrative purposes only. Your email address will only be used for occasional contact. If you are willing to be contacted by post or email about appeals for donations, please give your permission

I can be contacted about donations for Birmingham Museums: Yes ☐ No ☐

PLEASE WRITE IN CAPITAL LETTERS

MEMBERSHIP CATEGORY AND ANNUAL RATES

(Please tick)

☐ **SINGLE** £32

☐ **DOUBLE** £48
(full rate Includes 2 children under 16)

CONCESSIONARY RATES

☐ **SINGLE** £21

☐ **DOUBLE** £32

☐ **STUDENT** £15

SORT CODE 30-00-06
A/C NO 00248432



RIGHT: Aston Hall

NEWS FROM THE VOLUNTEERS

BY MATTHEW CULLANE, INTERIM VOLUNTEER MANAGER,
BIRMINGHAM MUSEUMS TRUST

We've seen quite a lot going on over the past few weeks, with the opening of a new exhibition at Soho House and with BMAG settling in to being open until October and to welcoming visitors through its doors again.

We are delighted to have had lots of new volunteers at BMAG, and a few familiar faces returning. They're all doing excellent work getting to know the new exhibitions and helping ensure our visitors have an entertaining and informative time.

Over at Weoley Castle the Castle Keepers are working on a new cleaning technique for removing moss from the stones as a way to protect and conserve the site. Preparations are also well underway for Medieval Day. As our historic properties gear up for summer, the garden volunteers there are doing their utmost to prune and trim the outdoor spaces to be enjoyed by visitors, and preparations are being made at all of our Historic Properties for a whole suite of events that'll be taking place, particularly over the summer holidays.

One of those events is the Jamaica 0121 Festival at Aston Park which Aston Hall will be joining in with. The festival will not only be celebrating 60 years of Jamaican independence but will showcase the culture that Jamaica has exported to Birmingham. Hopefully

lots of our volunteers will take the chance to become involved with it. For more information about the Festival and Aston Hall's role in it please have a look at this page on our website: www.birminghammuseums.org.uk/aston/whats-on/jamaica-0121-at-aston-hall

And the final and most important upcoming event in the volunteering calendar is our Volunteer Picnic which will be held on Thursday 21 July at Soho House. It'll run between 12pm and 4pm with food, games and good company. Pop along if you fancy it!

If you would like to join the team, either by volunteering for the Friends or for BMT, then take a look at our website for more information: www.birminghammuseums.org.uk/volunteering. In particular the Friends would love to hear from you if you would be interested in volunteering to deliver Friends events, joining the Friends Committee, or writing the Crossword for 'Artefacts'. If you would like to find out more please email: volunteer@birminghammuseums.org.uk. ■



'Blood & Fire: Our Journey Through Vanley Burke's History' at Soho House Museum

HELLO FROM BIRMINGHAM MUSEUMS

RACHEL COCKETT, DIRECTOR OF DEVELOPMENT

I hope you have had a chance to visit the newly reopened Museum & Art Gallery.

Personally, it has been rewarding to see the transformation from building site to vibrant gallery spaces bustling with visitors. The diverse and exciting range of exhibitions share stories of the city that are impactful, thoughtful and celebratory. It has been particularly affecting to see visitors sharing their reflections on living with Covid-19 in 'Unprecedented Times' and telling us about the stories they would like to see in 'Collection Stories'.

I recommend a trip to Soho House to see 'Blood & Fire: Our Journey Through Vanley Burke's History' (on until 30 October). This exhibition has transformed the visitor centre gallery and takes you on a journey through the artist's history and the Black British experience. The combination of visual material, photographs and personal objects take you on a journey that is both a matter of public historic record and intensely personal, bringing the impact of the global to the local.

For those of you who are missing some of your favourite artworks you can make a trip to the Barber Institute where you can see

three of our masterpieces on display. Ford Madox Brown's 'The Last of England' (1855), il Guercino's 'Erminia and the Shepherd' (c.1620), and Petrus Christus' 'The Man of Sorrows' (c.1450) are all displayed within the Barber's galleries. Whilst you are there, I recommend dropping into The Lapworth Museum of Geology: not only is our collection of gems on display there, but there is also a rather dramatic dinosaur. Enjoy!

We are delighted to invite our Friends members to a special event. Our Co-CEOs Sara Wajid MBE and Zak Mensah will share insights, anecdotes and more on our future plans for Birmingham Museums. Find out more on page 7.

Finally, don't forget that the Museum & Art Gallery will close in December 2022 to allow the ongoing essential electrical works programme and infrastructure works to take place during 2023, before the building reopens fully in 2024. Do make your visit soon to make the most of the time we are open! ■



ABOVE: 'View of the Grand Canal from the Palazzo Bembo to Palazzo Vendramin-Calergi', from the Woburn Abbey Collection

CANALETTO: A VENETIAN'S VIEW

'Canaletto: A Venetian's View' will be on display at Worcester City Art Gallery and Museum from Saturday 1 October 2022 – Saturday 7 January 2023.

The exhibition will celebrate the wonderful work of Canaletto, featuring stunning paintings on loan from Woburn Abbey, Birmingham Museums, Tate and Compton Verney, together with artworks from Worcester's Fine Art Collection.

Born in Venice, Giovanni Antonio Canal (1697 – 1768), commonly known as Canaletto, was an important member of the 18th century Venetian school. He became very popular with English collectors, and visited England repeatedly between 1746-56.

Canaletto revolutionised the use of colour, ground and canvas and pioneered the technique of painting from life, sitting in front of the subject outdoors as opposed to his contemporaries who completed paintings in the studio. This exhibition explores Canaletto's work and the impact he had on the generations of artists who followed him.

It is extremely rare for this hugely significant collection to leave Woburn, and the first time they will be hung with other examples of Canaletto's work. The paintings on display comprise the largest set of paintings Canaletto produced for a single patron, the fourth Duke of Bedford, who commissioned the works in the 1730s. They are considered the absolute best of Canaletto's paintings of Venice. The exhibition is being described as the most ambitious in the history of Worcester City Art Gallery and Museum.

Deborah Fox, Senior Curator, commented: 'We are committed to bringing great art and artists to the region and through bringing Canaletto to Worcester we are offering a once in a generation opportunity to see these incredible artworks 'on your doorstep' as well as creating an opportunity to showcase and reinterpret important works in our own collection.'

'We see this exhibition as a wonderful opportunity not only to bring world class art to the gallery, but also to examine its influence on some of Worcester's best-loved artworks.'

The 20 paintings of Venice on loan from Woburn Abbey will be accompanied by 3 other works by Canaletto (two views of Warwick

Castle on loan from Birmingham Museums and a view of Vauxhall Gardens which would normally hang at Compton Verney) as well as a wonderful work by William Marlow, considered to be Canaletto's natural heir, on loan from Tate. One of the views of Warwick Castle on loan from Birmingham – 'Warwick Castle, East Front from the Outer Court' – was purchased for Birmingham's collection in 1978, thanks to funding from a number of different contributors including the Friends.

The influence of Canaletto's work will be further explored through Worcester City Art Gallery and Museum's own collection including a beautiful view of Worcester Cathedral by Marlow and works by Paul Sandby, Samuel Prout and Samuel Rowlandson who were all heavily influenced by Canaletto. Worcester's most famous artist, Benjamin Williams Leader, will also feature in the exhibition through the inclusion of one of his most famous works - 'February, Fill Dyke' - also on loan from Birmingham Museums.

'Canaletto: A Venetian's View' at Worcester City Art Gallery and Museum will provide the opportunity to see Canaletto's paintings up close and for the visitor to take a scenic tour of the golden age of Venice through the amazing landscapes.

The exhibition will be accompanied by a programme of talks and tours including: 'Bringing Canaletto to Worcester: Bite Size Talk': Tuesday 8 November, 1.30 – 2pm. £3 per person.

This exhibition has been made possible with funding from the Art Fund, the Elmley Foundation, Worcester City Council and Arts Worcestershire. Tickets are on sale now. To book please visit www.museumsworcestershire.org.uk.

Worcester City Art Gallery and Museum
Saturday 1 October 2022 – Saturday 7 January 2023

Monday to Saturday 10.30am – 4.30pm

Ticket prices: Standard: £8; Worcester residents: £4; Children up to 16: FREE; Worcester City Art Gallery & Museum Members: FREE; Art Fund Members: £4

Booking via: www.museumsworcestershire.org.uk ■

CHANGING BIRMINGHAM ~ ITS PEOPLE AND PLACES

FINDING A VOICE

'Lo! We answer ; See! We come / Quick at freedom's holy call' *
From 'Hymn of the Union'

LEFT: 'Meeting of the Birmingham Political Union' by Benjamin Robert Haydon, 1832-33; 1937P370; Presented by the Friends of Birmingham Museums & Art Gallery, 1937; Photo by Birmingham Museums Trust, licensed under CC0

RIGHT: 'Suffragist Banner - West Midland Federation', 1912, 1981F15; Photo by Birmingham Museums Trust, licensed under CC0

Exploring the database of the Friends' acquisitions since 1931, which is now available on our website www.fbmt.org.uk, I have discovered some interesting acquisitions – including an impressive painting of a large public meeting in Birmingham. My quarterly article in 'Artefacts' seemed a good opportunity to investigate the story behind it!

Shortly after the end of the Napoleonic wars in 1815 there was an economic depression and a number of trade recessions, which caused much distress in Birmingham and fuelled increasing frustration with the existing political system. There was little faith in a system which was based on a very limited electorate and in which Birmingham's ever-increasing population had to rely on Warwickshire MPs. There were many so-called 'rotten' boroughs where seats were effectively 'bought' with riotous polling days and lavish hospitality - some might say bribery. Into this situation came two influential figures: Thomas Attwood and George Edmonds. 'King Tom', as Attwood became known, came from a wealthy industrial family in Halesowen. Educated at Wolverhampton Grammar School, he became a banker based in Birmingham. Coming from a conventional political background he moved onto a radical political platform as a result of his economic proposals being rejected by the governing elite.

George Edmonds became involved in the campaign for political reform in 1812, and was imprisoned in Warwick Castle for 6 months. In 1830 he joined forces with Attwood in founding the Birmingham Political Union (BPU). Its first public meeting was held in January 1830 at the Beardsworth Repository, a horse dealers yard set between Moseley Street and Cheapside which was able to accommodate over 10,000 people. Attwood's success as a public speaker, his willingness to organise a popular mass movement and his use of radical language to highlight common interests - 'If the masters flourish the men flourish with them' - quickly made him a figure with a national profile. The BPU model was rapidly copied across the region and across the country, putting immense pressure on Parliament to bring forward legislation to reform the electoral system.

In 1832, legislation to introduce fairly modest changes – the Third Reform Bill – was blocked by the House of Lords. This brings us to the 'Days of May' and the subject of our painting, which depicts the 7th May rally – 'the Gathering of the Unions'. Birmingham and the BPU were at the centre of the national campaign for the reform of Parliament, with the BPU being one of the principal organisations involved in the agitation. Numbers attending this rally were estimated to be up to 200,000 and 40 Unions were involved. The location was Newhall Hill, now part of the Jewellery Quarter, in what was then a naturally formed amphitheatre. It is still possible to walk up Newhall Hill Street and imagine the setting for this painting: the speakers, including Attwood and Edmonds, addressing this huge assembly with people from all over the region and banners flying. Many of the attendees would have set off early in the morning, travelling on foot from Coventry and Wolverhampton, and returning in the evening, demonstrating their commitment to the cause. The meeting commenced with the



singing of the 'Hymn of the Union'*, which would have echoed around this immense gathering and, such was the significance of the event, it was reported across Britain and continental Europe.

The legislation was finally passed later that year and, as a result, Birmingham received its first two MPs. Unsurprisingly Thomas Attwood was elected unopposed, as was Joshua Scholefield, but George Edmonds' candidature was not supported. Despite the achievements, disillusionment and frustration quickly set in, both amongst the campaigners and Attwood himself who felt isolated in Parliament as he was not part of the major political groupings. The result was a new more militant movement called Chartism, based on the six demands of the People's Charter, including universal male suffrage and the vote by secret ballot, which initially the BPU cooperated with. This resulted in Attwood's last major political act, presenting the Chartist petition to Parliament in 1838, which was soundly rejected. You can, of course, sit with Attwood on the steps of Chamberlain Square and discuss the events of the 1830s as his modern statue reposes in this location.

The first half of the nineteenth century had focussed on male universal suffrage but, by the 1860s, female suffrage was finally on the agenda with the formation of the Birmingham Women's Suffrage Society in 1868. In 1869 women were able to vote and stand in local elections and in 1870, they were able to serve on School Boards. Eliza Sturge was elected to the first school Board in Birmingham and Edgbaston resident Catherine Osler emerged as a major campaigner in Birmingham for female suffrage (see her profile on our website). The twentieth century campaign for female suffrage and the Suffragettes in Birmingham deserves an article in its own right but it was not until 1930 that full universal suffrage was achieved, one hundred years after the BPU was set up. ■

By Jim Wells
Friends Trustee

For sources and further background reading please visit our website: fbmt.org.uk/publications.



COVENTRY

CITY OF CULTURE

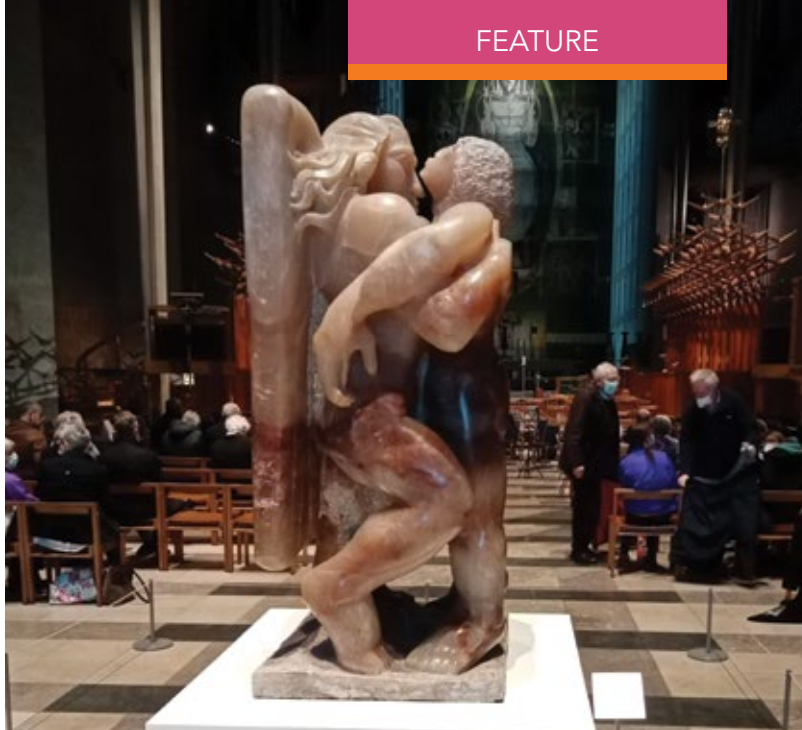
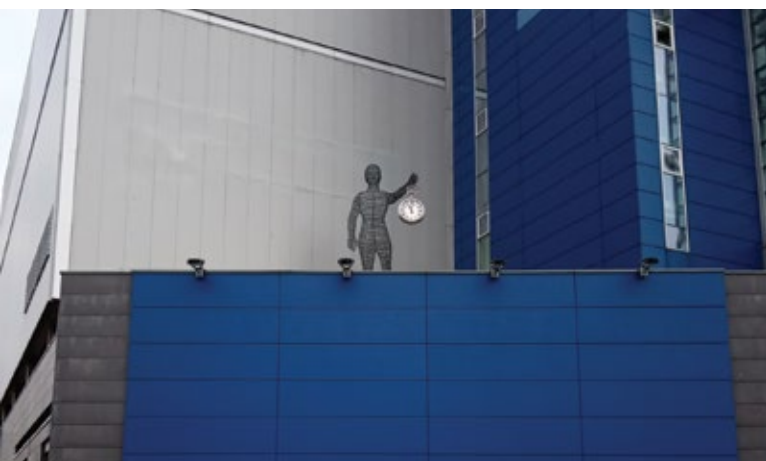
In December 2017, Coventry followed Derry and Hull as the successful bidder to be the next 'City of Culture' in 2021. Coventry was chosen over the competing claims of Paisley, Stoke, Swansea and Sunderland. Due to the Covid lockdown, the start of the year's events was delayed and the Year of Culture continued into the summer of 2022.

Why was Coventry chosen above the claims of the other cities? How might these cultural experiences help the city recover and move forward after the years of social deprivation and the loss of its industrial heritage?

The Creative Director of Coventry City of Culture, Chenine Bhathena, considered the city's role in post-war peace, reconciliation and city twinning as important factors in the choice, as well as Coventry's reputation as a city of music and artistic innovation. She also felt that, as Coventry was less well known than its Midland neighbours, the city provided a blank canvas for the year's events.

Over the years, music has certainly been a key part of the arts in Coventry. Benjamin Britten's 'War Requiem' was commissioned to

mark the consecration of Coventry Cathedral, which was rebuilt following a bombing raid in World War II. It was premiered in the new Cathedral in 1962. The pioneering electronica of Delia Derbyshire (born in 1937 in Coventry) has brought her posthumous fame. A new Music Museum, near the site of the old Highfield Road stadium, features both Derbyshire's work and Ska music, following the 'House is a Feeling' exhibition in the old IKEA building last year. This show also highlighted music by bands like 'The Specials', combining black and white musicians and influences, a key factor in encouraging young people in the 1980s to turn away from fighting on Saturday nights and towards dancing through to Sunday mornings! Meanwhile, at the Cathedral, the talented young Canadian organist Rachel Mathon worked with local LGBT musicians in a 'Classically Queer' collaboration, and Ex



FAR LEFT: The son et lumière climax to the Gratte Ciel outdoor show.

TOP LEFT: Ghislaine Howard's 'The Washing of the Feet', 2004, on display in Coventry last year as a recent addition to the Methodist Church Collection of Modern Christian Art.

ABOVE: Epstein's 'Jacob and the Angel' on display in Coventry Cathedral during the performance of 'When a Child is a Witness', a requiem for refugees including a choir from a local primary school.

LEFT: Favour Jonathan's prizewinning statue dedicated to Ira Aldridge, the first African American to manage a British theatre (Coventry's Theatre Royal in 1828). The statue is installed on the former IKEA building which is scheduled to house the National Collections Centre.

All photos taken by Peter and Liz Baker.

Cathedra encouraged the participation of local schoolchildren in their concerts.

The Herbert Museum and Art Gallery played host to the Turner Prize during 2021, marking the first time the Turner had appeared at a Midland gallery and also the first time that all the five shortlisted were artist collaborations. Alongside the Turner, the Coventry Biennial 'Hyper Possible' featured the work of over 50 artists, assistants and technicians at the Herbert and at various other sites in the city and across Warwickshire. Some artists were famous (Vanley Burke, Lubaina Himid, Keith Piper, Claudette Johnson...) while others were fresh out of art school. Their work responded to planetary and climate emergency concerns, issues from the past, challenges of the future and even subjects from the history of the earth. 'Listening to the Anthropocene', a sound installation in the darkness of the old Cathedral undercroft, was one example and Kate Carr also presented another subterranean soundscape featuring the River Sherbourne flowing through the city centre culverts from historic Spon End towards the River Avon. Like the River Rea in Birmingham, there are plans to rewild the River Sherbourne as a city centre feature.

A particularly poignant collaboration in 'Hyper Possible' was 'We Bear' by Faye Claridge. She worked remotely with 31 people incarcerated in 25 prisons creating new artworks inspired by themes around the Warwickshire symbol of the chained bear. Making art in prison during lockdown in the most difficult of circumstances (up to 23 hours daily in cells and no visitors), 'We Bear' was dedicated to one participant who did not survive the pandemic and all those grieving the loss of loved ones due to Covid.

Meanwhile a vacant shop window near the Belgrade Theatre was decorated by the London artist Sharon Walters (whose first solo exhibition has just completed its run at the MAC in Cannon Hill). Titled 'Friendly Forest', its theme was welcoming people back into the city centre after a year at home, to look in from the outside and admire new narratives and reflections.

Crowds welcomed the chance to get out and about again to see city centre spectacular shows too. Many came out on a cold autumn evening to welcome 'Little Amal', a giant puppet of a refugee child which had been walked across Europe by her teams of puppeteers. Coventry, with its reputation as a city of peace and reconciliation, was an obvious stop on her UK itinerary. Towards the end of the Year of Culture came another outdoor spectacular from France, the aerial acrobats of Gratte Ciel (literally 'Skyscraper') who performed their gymnastics high above the Lady Godiva statue in Priory Square.

And what of the future? Is there anything more than happy memories for Coventry? Favour Jonathan won a Sky Arts competition and her tribute to Ira Aldridge decorates the exterior of the old IKEA building which awaits a national collection. The Music Museum is up and running and there is a new family friendly digital art space called Reel Store in the former print works of the 'Coventry Telegraph'. The Herbert and the Cathedral are always worth a visit but will that be enough to allow Coventry to come out from under the shadow of Stratford, Birmingham and Leicester?

I hope so. Coventry deserves it. ■

By Peter Baker, Friends Trustee



LEFT: 'Portrait of Mumtaz Mahal', Artist unknown, 1840-1890, Presented by the Friends of Birmingham Museums & Art Gallery, 1932, 1932P240, Photo by Birmingham Museums Trust, licensed under CC0

RIGHT: 'Conniveo' by Georgia Tucker, 2020, on display in the 'Our Challenging Planet' gallery at Thinktank

THE LAUNCH OF THE FRIENDS' ACQUISITIONS DATABASE

Since its formation in 1931, the Friends have enhanced Birmingham's collections by supporting the purchase of over 2,700 acquisitions, funding conservation work and enabling the public to access and enjoy the collections.

The process of collating information about these acquisitions began over 20 years ago and the database is now complete and provides a comprehensive list of all of the items which the Friends have purchased for Birmingham Museums over the last 90+ years.

In 2006, to celebrate the Friends' 75th Anniversary, Margaret Boniface, the Friends' Honorary Archivist, working closely alongside Birmingham Museums' staff, set to work to complete the task of producing a comprehensive database of all the items which the Friends had helped to purchase. In a talk which Margaret wrote at this time, she explained that it had been, and would continue to be, a long and complicated process as, historically, the Minute-taking had been sketchy. Other complications included the introduction, during the 1980s, of the Friends' 'Small Purchase Scheme'. This gave Birmingham Museums' Curators the opportunity to buy an item for under £100 without asking the permission of the Friends' Committee. According to the Acquisitions Database, over 90 items were purchased using this Scheme, including a number of woodcuts by the Birmingham artist Arthur Joseph Gaskin, a Cadbury's Chocolate Box from the 1920s, a number of decorated jugs by the ceramicist Charles H Brannam and a Confraternity Badge by John Hardman. From 1998, the Curators were required to fill out application forms for their proposed purchases and to present each case to the Friends' Committee. As a result, records for anything purchased from that time to date have been kept on file.

Over the years, Margaret noted changes in how items were bought. In the early years, the Friends bought items outright for Birmingham Museums but gradually, because of increases in prices, particularly for paintings, the Friends tended to give part-funding, which then enabled Birmingham Museums to approach other bodies for match funding and grants towards purchases.

With the assistance of staff at Birmingham Museums, Margaret

Boniface, Margaret Lister, David Foster and Elisabeth Donaghue together produced a comprehensive database cataloguing all of the Friends' Acquisitions since 1931.

Bill Lane, the Friends' Vice Chair, has been working on making a simple version of the Friends' Acquisitions Database available in the 'Publications' section of the Friends' website: <https://fbmt.org.uk/publications/friends-acquisitions-history/>. It is currently a work in progress, as we are planning to add more images using Birmingham Museums Trust's Digital Asset Resource, so please do keep checking back as we update it. We are delighted that Rosalind McCarthy, one of the Friends' Trustees, will continue to keep the database up-to-date.

At the inaugural Meeting of the subscribers to the Association of the Friends of the Gallery, which was held at the Art Gallery on Wednesday 1 July 1931, the following three items were purchased: a portrait miniature of Mumtaz Mahal; a Sardonyx Cameo by Schmidt from the mid 19th century; and 'Cyclamen', a painting by Florence Engelbach from 1931. The cost of these three acquisitions came to a total of £61 – 15s – 0d. From these to our latest acquisition in 2021 – the outright purchase of 'Conniveo', a vinyl photographic image printed on plexiglass by artist Georgia Tucker for £534 – the Friends have continued to adhere to the objectives laid out in our Constitution: 'to support and assist Birmingham Museums and Art Gallery and to promote their use and enjoyment by the public'. We are proud that, despite the pressures which have been felt both historically and in more recent times, the Friends have continued to maintain our strong and supportive relationship with Birmingham Museums and to help them to continue to build their world-class museum collections. ■

By Melissa Hughes

QUINTON LOCAL HISTORY SOCIETY'S ‘H.R. WILSON’S QUINTON STORY’



Quinton Local History Society's evocative 'H.R. Wilson's Quinton Story' is a collection of paintings and drawings by local artist, Horace Wilson (1911-2006) student of Birmingham School of Arts & Crafts and a regular exhibitor throughout the Midlands, who won his first art prize aged nine. The ancient township of Quinton was part of Hales Owen until annexed by Birmingham in 1909.

With commentaries on the book's 28 paintings and drawings by local historian Dr Michael Hall, Wilson's Quinton scenes, produced largely during the second half of the 20th century, capture once significant landmarks now mostly gone. For that reason, if none other, these are powerful images, inviting the viewer to look closely, to reflect carefully and to allow what H.R. Wilson saw and cared about to continue to speak and inform our understanding.

Prior to World War II, Quinton remained very much an agricultural community in which the presence of the Methodist cause predated the arrival of the Anglican Church – themes which Wilson regularly addressed.

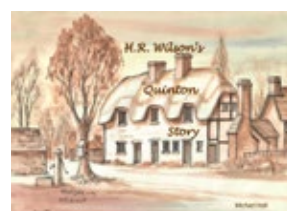
Listed as a Hales Owen Abbey Grange Farm in the 13th century, Redhall Farm doubtless had a succession of farm houses. The last, painted by Wilson, captures the rural charm of this significant building just three years before its demolition, offering a glimpse of one important aspect of Quinton's landscape which is now lost and largely forgotten.

Opened in 1871, Hagley Road Chapel was Quinton's second Wesleyan building, replacing that in which John Wesley had

preached 90 years earlier. It continued to serve Quinton Wesleyans until 1935, ending its days as the Postmen's (Sorting) Office, before demolition around 1948. H.R. Wilson's painting of the chapel in winter looks towards Hales Owen from the junction of College Road and Hagley Road West and shows the chapel dominating the Toll House, by then a private residence.

The Anglican Christ Church (opened 1840), one of just three remaining Quinton buildings which Wilson painted, was also one of his most popular subjects. In addition to the painting shown here are pen and ink drawings from the same perspective, and watercolours and architectural sketches from the North and North East. ■

By Dr Michael Hall



'H.R. Wilson's Quinton Story' (46pp, hardback) is a limited edition of 100 copies. As there will be no re-print the book has become a desirable collectors' item. Remaining copies are available at the remarkably low price of £15 (including p&p) from QLHS, 32 Barston Road. Oldbury, West Midlands, B68 0PS.



FEATURE

WOMEN ARTISTS

OF THE ROYAL BIRMINGHAM SOCIETY OF ARTISTS, 1884 – 2012

RBSA Gallery, 4 Brook Street, Birmingham B3 1SA
26th July – 27th August



The first exhibition organised by the Birmingham Academy of Arts, the ancestor of the RBSA, took place in 1814 in rented rooms in Union Passage. Open to any artist living within thirty miles of the town, it attracted thirty-eight contributors, two of whom were women. Twenty-eight years later, out of the 424 works shown at the Birmingham Society of Artists' exhibition at the Athenaeum in Temple Row, nine were by women. Throughout Britain, professional training in the rudiments of art and design was essentially a male preserve because of the apprenticeship system. Women were excluded because, in the minds of the employers, they were not worth investing in because marriage and motherhood would take them out of the workshop to the home. In the Birmingham jannanning industry, a main focal point of decorative art production, women were employed but confined to the low skilled tasks while men were engaged in design and decoration which required art training.

The situation improved, at least for some women, in 1877 with the arrival of the progressive Arts and Crafts educationalist Edward Taylor (1838 – 1912) as Head of the Birmingham Society of Arts and School of Design which evolved into the magnificent Municipal School of Art in Margaret Street in 1885. With over 3,000 students in 1900, the school and its outstations offered hands-on training in drawing, metalwork, jewellery making, bookbinding and illustration. These courses aimed to create a generation of young male and female artist-artisans capable of original design and innovation. Taylor's policy of directly recruiting his best students, of both sexes, as teachers led to a settled, motivated cadre at the centre of the cultural life of the city. They were encouraged to participate in the open exhibition programme of the RBSA and to apply for associate membership. The women finally had a chance to prove themselves. New associates included rising stars of the Arts and Crafts movement: the jeweller and illustrator Georgie Gaskin (1866 – 1934), the art enameller and illuminator Kate Eadie (1878 – 1945) and the painter and leatherworker Mary Gibson (1888 – 1966). Margaret Gere (1878 – 1965), elected an associate in 1909, was a friend of Virginia Woolf and exhibited with the New English Art Club, connecting the RBSA with a wider cultural

network. With her half-sister, Edith (1875 – 1959), 'The Masterful Miss Geres' enhanced the reputation of the society. These women were important role models for many of the female students destined for jobs as designers and decorators in local workshops.

But why were there no female RBSA members? They were simply not allowed to apply for elected membership. Again, marriage and motherhood were seen as incompatible with a life-long professional career in art. Membership was reserved for men, the traditional breadwinners. Only in 1943 were the rules changed but no women applied until March 1952 when the first female member, Teresa Clarke (Lady Clarke, 1886 – 1988), was elected. This was followed in October the same year by the first solo exhibition of work by a woman – the sculptor and painter Joan Woollard (1916 – 2008) who later served as the first female President of the RBSA from 1978 – 1980. The painter Irene Welburn (1908 – 2001) was elected Secretary of the society between 1959 -1964, helping to modernise its image at a particularly volatile moment in British art. One of the most distinguished members in recent times was the painter and print-maker Kate Fryer (1910 – 2017). As a teacher at Bath Academy of Art in the 1930s she worked alongside Walter Sickert (1860 – 1942) and Therese Lessore (1884 – 1945) and the pioneer of British Abstraction, William Scott (1913 – 1989). Her connections with the foundations of British Post-Impressionism, her professionalism and kindness were a great asset to the RBSA.

Today, over 50 per cent of the membership of the RBSA is female.

This exhibition, marking the 70th anniversary of the election of the first female member, examines the contribution made by women artists to the history of the RBSA and the cultural life of the city. It focuses, of necessity, on the work of deceased members and associates. ■

By Brendan Flynn, Hon. RBSA Professor of Art History

LEFT: Mary Gibson, 'The Angel of the Annunciation',
Courtesy of Wolverhampton Art Gallery

TOP LEFT: Kate Eadie, 'The Defence of Guenevere', Private Collection

TOP RIGHT: Irene Welburn, 'Nurse Brown from Jamaica', Courtesy of
Wolverhampton Art Gallery

For events which need to be pre-booked, bookings can be made by calling 0121 348 8263 or via the website – www.birminghammuseums.org.uk (unless alternative details are given).



ASTON HALL

Trinity Road, Aston, Birmingham, B6 6JD

See birminghammuseums.org.uk for up-to-date opening times and prices. Free entry for Friends. Charges apply to non-members. Discover the splendour of a grand Jacobean mansion.

Black is Beautiful, Blackness without Apology

Until 31 October 2022. Entry to this event is included in the price of admission. The 'Black is Beautiful, Blackness without Apology' exhibition is a transformation of Aston Hall's Boudoir into a young Black girl's contemporary dressing room. Featuring an imaginative combination of contemporary and 18th century items the display celebrates Black women and the rich diverse culture within the Black diaspora.

Jamaica 0121 at Aston Hall

6-7 August 2022. Aston Park is hosting the Jamaica 0121 Festival and Aston Hall is getting into the party atmosphere! The festival will not only be celebrating 60 years of Jamaican independence but will showcase the culture that Jamaica has exported to Birmingham. Enjoy FREE entry to the hall and rest in the peace of our formal gardens. Visitors will get an opportunity to get a taste of Jamaica over the weekend during the festival: Jerk Stalls, Jamaican Cuisine, arts, craft, and fashion will all be available in the park. No booking required.

Whodunnit Mystery Trail

14 August 2022. A drop-dead fun mystery trail for families and those young at heart. Visit the Hall and see if you can solve the devilish puzzle! Only you can stop a time-traveller from changing history... or can you?!

Outdoor Theatre: The Three Musketeers

29 August 2022. Buckle your swashes and ready the chandeliers for swinging on as the Attic Theatre and Tread the Boards Theatre Company visit Aston Hall for an outdoor production of 'The 3 Musketeers'. All for one, and one for all!

Heritage Open Day

11 September 2022. This is a rare opportunity to visit the Hall for FREE as part of Heritage Open Days. This event is likely to be extremely popular, so pre-booking is essential. Aston Hall is open from 12noon-4pm, with the last timed entrance to the Hall at 3pm. The Stable Yard Café and grounds are open from 11am-4pm.

Aston Alive! Hands-on History

17 September 2022. Get hands-on with history and immerse yourself in the crafts and lives of people in the past! Explore this magnificent seventeenth century mansion, plunge into history and meet colourful characters from the past.

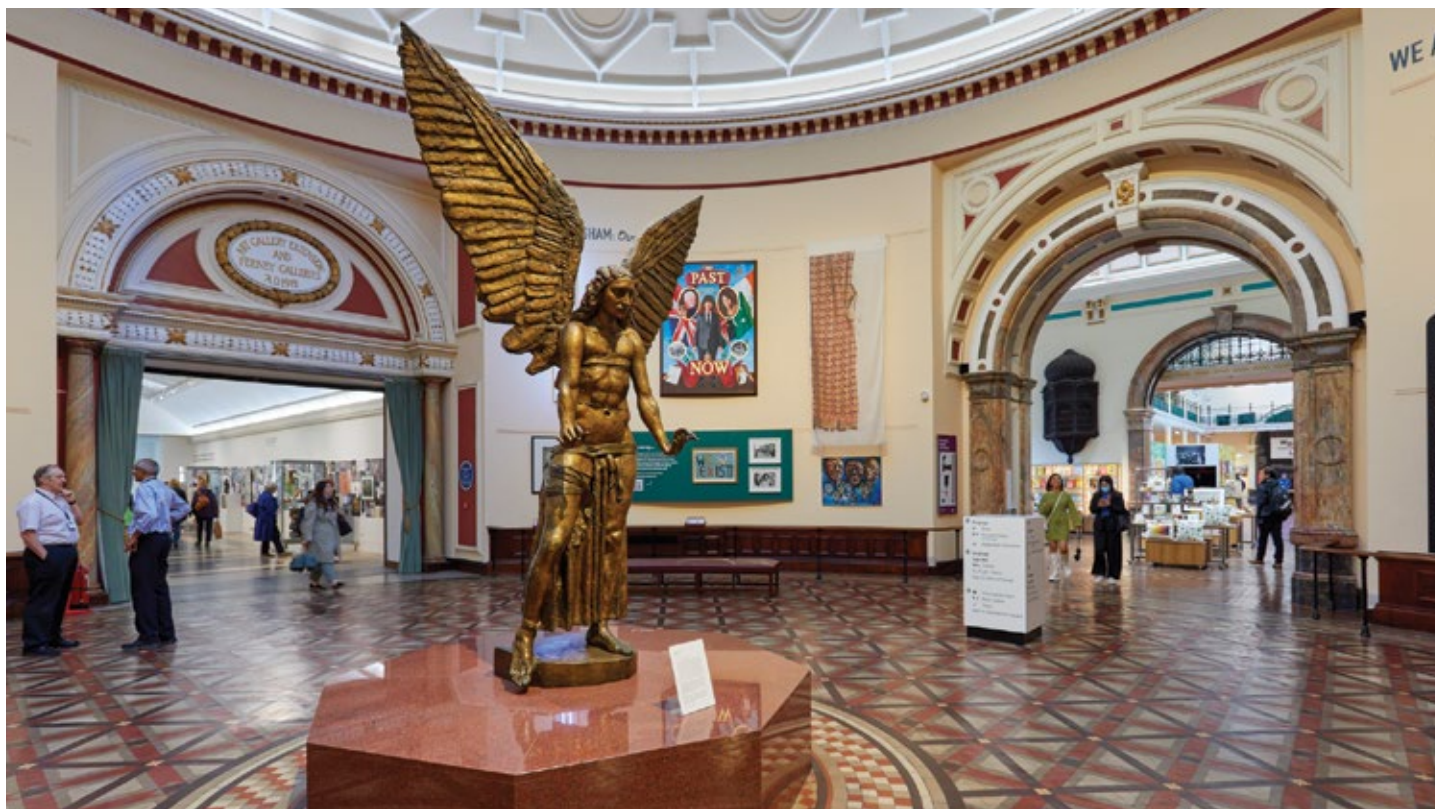
Aston Hall'oween

29 October 2022. Join us for some family friendly spooky fun. Meet the witch hunter as he prowls the Hall looking for witches! Have a chat with the wise woman who will be sure to have a cure for what ails you, and meet the magician as he shows there is more to the universe than we can see and hold... Is the hall cursed by witchcraft? Join us to find out!

Torchlit Ghost Tours

21-23 and 28-30 October 2022. Explore one of Britain's most haunted buildings after dark by the light of a torch as one of our 'spooktacular'

Below: The Round Room at Birmingham Museum & Art Gallery





Above: 'Blood & Fire: Our Journey Through Vanley Burke's History' at Soho House Museum

guides reveals the darker past of the Hall and its denizens. Expect a few laughs and scares as we tell you all about the Hall's intriguing past. We're sure you'll be left wondering if ghosts really do exist.



**MUSEUM &
ART GALLERY**
BIRMINGHAM

Chamberlain Square, Birmingham, B3 3DH

Birmingham Museum & Art Gallery is partially back open for a series of pop-up displays and live events that will bring a different feel to the historic building for the Commonwealth Games and Birmingham 2022 Festival.

Wonderland: Birmingham's Cinema Stories

Until 30 October 2022, Monday - Sunday, 10am – 5pm. Free. Roving film explorers Flatpack Projects are embarking on their biggest adventure yet, working with a team of volunteer researchers and Birmingham Museums Trust to map all of the city's 150+ cinemas - from fairground beginnings to streamlined Odeons, from South Asian extravaganzas to today's pop-ups and outdoor film shows. 'Wonderland' will explore how cinema has shaped the streets, social lives and dreams of Brummies over the past 125 years. The display will showcase unseen photographs and cinema memorabilia, alongside historic magic lanterns and optical toys from Birmingham's Collection.

Unprecedented Times

Until 30 October 2022, Monday - Sunday, 10am – 5pm. Free. 'Unprecedented Times' invites visitors to take a moment to pause and reflect on all that has passed in Birmingham over the last two years

of living with Covid-19. Developed in partnership with Birmingham City Council's Public Health Division and Birmingham Museums' Community Action Panel, this display will explore survival of the human spirit and the power of art in public crises past and present.

We Are Birmingham

Until 30 October 2022, Monday - Sunday, 10am – 5pm. Free. The museum's iconic Round Room is being radically transformed. 'We Are Birmingham' will reflect the people of 21st Century Birmingham. Presenting a vivid celebration of the city that Birmingham is now, as well as aspirations of what the city could become, 'We Are Birmingham' is a collaboration between a group of six young people of colour from Don't Settle and Birmingham Museums.

SaVÄge K'Lub presents VÄ TAMATEA:

The inaugural Birmingham SaVÄge K'Lubroom

Until 30 October 2022, Monday - Sunday, 10am – 5pm. Free. New Zealand/Aotearoa artists Rosanna Raymond and Jaimie Waititi present a 'SaVÄge K'Lubroom' within Birmingham Museum and Art Gallery's Industrial Gallery. The installation reclaims the gentlemen's clubs of the same name first established in London in the 19th century. 'SaVÄge K'Lub' poses the question: what might it mean to be a savage today? The installation forms part of 'The Healing Gardens of Bab', presented by Fierce as part of the Birmingham 2022 Festival. Generously supported by the Paul Hamlyn Foundation, National Lottery Community Fund, Canada Council for the Arts, High Commission of Canada and Creative New Zealand.

CONTINUED OVER THE PAGE



Above: ThinkTank Science Museum Garden

In The Que: Celebrating the Que Club

Until 30 October 2022, Monday - Sunday, 10am – 5pm. Free. 'In The Que' is a sensory celebration of one of the UK's greatest music venues, developed and curated by the Birmingham Music Archive C.I.C. Located in one of Birmingham's most beautiful buildings, the Grade II* listed Methodist Central Hall, the Que Club was a live music venue and home of Rave and Dance culture in the city and beyond. Comprising personal artefacts, photographs, flyers, posters, other materials and a new thirty-five minute film, 'In The Que' celebrates the promoters, the musicians, the performers and the ravers who came to together in musical worship on the Que Club dancefloor.

Curated by the Birmingham Music Archive and Pretty Hate Productions. Generously supported by National Lottery Heritage Fund, and in partnership with Birmingham Museums Trust and the Birmingham 2022 Commonwealth Games programme.

Blacklash: Racism and the Struggle for Self-Defence

Until 30 October 2022, Monday - Sunday, 10am – 5pm. Free. From the mid-80s and over a period of two decades and across some of the UK's major inner-cities, Mukhtar Dar documented the struggles of Asian and African Caribbean communities against the pernicious and pervasive tidal wave of street and state racism.

Drawing on his extensive archive of photographic, video, and political ephemera, this installation explores the lived modality of what novelist, political thinker and activist Ambalavaner Sivanandan described as 'racism that kills and racism that discriminates'. This project has been created by Kalaboration Arts in partnership with Birmingham Museums Trust.



**BLAKESLEY
HALL**

Blakesley Road, Yardley, Birmingham, B25 8RN

See birminghammuseums.org.uk for up-to-date opening times and prices. Free entry for Friends. Charges apply to non-members. Blakesley Hall is a picture-perfect timber-framed Tudor house with beautiful gardens, situated just a few miles from the centre of Birmingham. It was built in 1590 by Richard Smalbroke, a member of one of Birmingham's leading merchant families.

Heritage Open Day

Saturday 10 September 2022, 11am – 4pm. Free admission day at Blakesley Hall to celebrate Birmingham Heritage Week and Heritage Open Days. We are operating a timed entrance to the Hall. Please pre-book your ticket to avoid disappointment as we cannot guarantee tickets will be available on the door. Blakesley Hall is open from 12pm to 4pm, with the last timed entrance to the Hall at 3.30pm. Herb Garden Café and the grounds are open from 11am-4pm.

Yardley Walk

Saturday 10 September 2022, 11.30am and 2pm. £5 per person. Join experts from the Birmingham and Warwickshire Archaeological Society in a leisurely 2.5 mile stroll around the village of Yardley to celebrate Birmingham Heritage Week and Heritage Open Days. Discover the hidden history of the area including two medieval moats that once surrounded manor houses, ridges remaining from medieval ploughing, and the historic buildings of old Yardley including (exterior only) St Edburgha's church and the timber-framed old grammar school.

The walk will be led by Dr Mike Hodder, former Birmingham City Archaeologist, and Sue Whitehouse, who devised the Society's

'See it for Free' programme, a web-based invitation to explore the archaeological sites of Birmingham and Warwickshire. The first walk will begin at 11.30am until 1pm. The second walk will begin at 2pm until 3.30pm. Pre-booking essential as only 25 places per walk. The walks will begin at Blakesley Hall.

Autumn Apple Day

Sunday 2 October 2022, 11am-4pm. £3 per person including admission to the Hall. Join us for Blakesley Hall's annual celebration of the apple. Find out about the history of the apple, how it was used in Tudor times and take part in our Apple Trail. The Pomology Project will be on site with the Apple Store with over 65 varieties of local apples to try. See demonstrations of Black Butter being made in the Barn with apples from local allotments. Meet Julian the Beekeeper and find out about the bees that are in the garden. There will be performances from the Glorishears of Brummagem Morris dancers in the garden.

Halloween Family Tour!

Friday 28 October 2022. Adult: £8; Concession: £6; Child: £4. Join our storyteller for a spooky tour of Blakesley Hall. Go around the Hall on a journey where you will find out all about Halloween traditions and stories! Collect your Halloween inspired sweet treat at the end of your tour to take home. Why not come along in your best spooky costume to add to the Halloween fun? Tours at: 11.30am, 1pm, 2pm and 3pm. Tours last 1 hour.

Blakesley by Night

Saturday 19 November 2022, 5.30-8.30pm. Adult: £8; Concession/Child: £7. Pre-Booking required. An atmospheric costumed evening tour. Find out about the 'night time' during the Tudor period and if Blakesley Hall has any ghostly tales. A rare chance to see Blakesley Hall in the moonlight. Tours at: 6.30pm, 7.15pm & 8pm. Tours last 45 minutes.

Father Christmas at Blakesley Hall

Saturday 10 and Sunday 11 December 2022, 11am-4.30pm. £25 per family ticket – up to 6 people on each ticket. Come along and meet Santa in the Great Hall and see Blakesley dressed for Christmas! Each child gets an activity pack to make a Christmas card at home. Write a letter to Santa and post it in our Christmas Polar post box. All children receive a small present when meeting Santa! Craft market in the Gallery. Perfect for Christmas gifts and presents. Timeslots available at: 11am-4.30pm at 10 minute intervals. Festive treats available in the Herb Garden Cafe too.



**SAREHOLE
MILL**

Sarehole Cole Bank Road, Hall Green, B13 0BD

See birminghammuseums.org.uk for up-to-date opening times and prices. Free entry for Friends. Charges apply to non-members. Discover the mill that has connections with Matthew Boulton and inspired famous author JRR Tolkien.



SOHO HOUSE

Soho Avenue, Handsworth, Birmingham, B18 5LB. See birminghammuseums.org.uk for up-to-date opening times and

prices. Free entry for Friends. Charges apply to non-members. Discover Soho House which was the elegant home of the industrialist and entrepreneur Matthew Boulton from 1766 to 1809.

Blood & Fire: Our Journey Through Vanley Burke's History

Until 30 October 2022, Wednesday - Sunday, 11am-4pm. Free. Evocative images taken by renowned photographer Vanley Burke will join archival material from his personal collection in a new exhibition at Soho House in Handsworth, taking visitors on a journey through the artist's history and the Black British experience. 'Blood & Fire: Our Journey Through Vanley Burke's History' is presented by the Birmingham 2022 Festival and generously supported by Arts Council England and the National Lottery Heritage Fund.



Millennium Point, Curzon Street, Birmingham, B4 7XG

Birmingham term time - Open Wednesday - Sunday, 10am - 5pm. Birmingham school holidays - Open Monday - Sunday, 10am - 5pm. Half price entry for Friends. Charges apply to non-members. Thinktank offers an extraordinary, fun-packed day out for all the family. From steam engines to a talking robot, this exciting museum is home to thousands of fascinating objects, and over 200 hands-on displays on science and technology.



WEOLEY CASTLE

Alwold Road, Birmingham, B29 5RX

The ruins of an exquisite fortified manor house built 750 years ago. Weoley Castle Ruins can be viewed from the viewing platform which is open every day throughout the year. It is free to view the ruins from the platform.

Birmingham Heritage Week Weoley Walking Tour

Saturday 17 September 2022, 11.30am and 2pm. £5 per person – a ticket is required for everyone attending the walk. Booking essential - limited places on each walk. Join us for a special guided walk as part Birmingham Heritage Week 2022. Learn about the archaeology of Weoley Castle and see some of the archaeological finds discovered at Weoley. There will be two guided walks around the site with archaeologist Mike Hodder at 11.30am and 2pm. NB. Wear waterproof clothing and outdoor footwear if weather is poor. The event is outdoors and involves walking.

Guided Tour and Craft Activity

Saturday 1 October, Saturday 5 November and Saturday 3 December 2022, 11am-12pm. Adult: £5; Child: £3. A guided tour of Weoley Castle – find out all about the history of the Ruins and walk around the site with one of our experienced guides. Craft activity in the Visitor Centre. NB. Wear waterproof clothing and outdoor footwear if weather is poor. The event is outdoors and involves walking.

For all events visit www.birminghammuseums.org.uk/whats-on for further information and to book.

IN THE AREA

BARBER INSTITUTE

University of Birmingham, Edgbaston, B15 2TS.
www.barber.org.uk

DÜRER: The Making of a Renaissance Master

Until 25 September 2022. Albrecht Dürer (1471-1528) combined an unparalleled virtuosity as painter and draftsman with an innovative approach to printmaking. He also possessed a shrewd entrepreneurial sense, and an ability to portray subjects and issues that appealed to the general public and the highest-ranking patrons alike – including the Holy Roman Emperors, Maximilian I and Charles V. These factors ensured his lasting reputation as the most important and influential artist of the Renaissance in northern Europe.

This exhibition of his finest works from the Royal Collection contains one of only two paintings by Dürer – and the sole portrait – in the UK, along with rare drawings and iconic prints.

The exhibition is the fifth in an annual collaborative series with Royal Collection Trust, curated by Masters' students from the University of Birmingham's Department of Art History, Curating and Visual Studies.

To Have and to Hold: Portrait Miniature Jewellery

Until 18 September 2022. Treasured as tokens of love and admiration, portrait miniatures were worn or carried as jewellery by both men and women, and were popular from the 16th to the middle of the 19th century. Often encased in intricately bejewelled frames or snugly stowed in locket, these tiny likenesses were frequently given as gifts and keepsakes by lovers and patrons. As well as featuring dazzling portraiture, this display considers the materiality of the miniatures, and focuses particularly on the pearls that were often intrinsic to the manufacture and meaning of these mini masterpieces. Many of these miniatures are on long-term loan to the Barber from private collections – including the renowned Daphne Foskett collection – and are among the very best examples of this compelling genre.

Taking Root: The Sustaining Life of Trees

Until 16 October 2022. Trees have been a subject for artists since time immemorial – as intrinsic landscape elements or for their symbolism, used as compositional devices as well as to convey the changing seasons, the passage of time or other associations. This display, inspired by the Birmingham 2022 Festival theme of Nature, features fine drawings, watercolours and prints by Van de Velde and Van Dyck, Turner and Rousseau from the Barber's own collection of works on paper.

Paying Respects: Money and Mortality

Until June 2023. Money has always been a matter of life and death. Coins are struck in tribute to emperors, monarchs and leaders recently deceased, and have honoured illustrious ancestors through the portraits they can carry. They have been used in many of the rituals that mark the passage from life to afterlife – and often portray on their surfaces the trappings and ceremonies of death. This compelling new exhibition features highlights from the Barber superlative collections of Roman, Byzantine and Medieval coins – one of the finest in the world.

Visiting Masterpieces: Treasures from Birmingham Museum and Art Gallery

Until December 2023. Three spectacular loans from Birmingham Museum and Art Gallery are now on display at the Barber – including one of the nation's most iconic paintings. 'The Last of England', created in 1855 by leading Pre-Raphaelite artist Ford Madox Brown, is one of Birmingham's most famous art treasures. It is joined by the monumental 'Erminia and the Shepherd', painted by the eminent Italian Baroque painter Guercino in around 1620 and 'The Man of Sorrows', of around 1450, by Flemish painter Petrus Christus.

Generously lent by Birmingham Museums Trust, these dazzling and diverse masterpieces hang among the Barber's own outstanding collection for the next two years while the city art gallery is closed for essential rewiring work.

BEVERE GALLERY

Bevere Lane, Worcester WR3 7RQ
beveregallery.com

Bevere Gallery is open Tuesday to Saturday, 10am – 4pm.

Bevere Gallery is a unique Gallery set in the grounds of a Georgian country house near Worcester. The Gallery represents over 120 ceramicists, all displaying high level skills and an individual voice. Each month selected makers and newcomers are profiled, adding to the exceptional range of makers whose work is always on display.

Masazumi Kamazaki, Chiu-I Wu and Sara Moorhouse

28 July – 31 August 2022. Masazumi Kamazaki is Japanese and has lived and worked in Wales for the past fifteen years. His Far-Eastern heritage is evident in his extraordinary work. It is quirky and his figures, both human and animal, will either make you smile or wince – they will not leave you indifferent. His previous features at Bevere have always generated interest. This is indeed unique work that is very different from any other maker which the Gallery represents. Chiu-I Wu has shown at Bevere for several years now. She comes from Taiwan and came to England in 2003. She still spends time in both countries. She has a strong design sense and every piece is meticulously constructed. Most of her work is monochrome clay, which reinforces the emphasis on design and subject. Although there can be no mistaking her heritage, she nevertheless makes very contemporary ceramic art. Sara Moorhouse's meticulous approach to decoration was developed in ceramics, colour and spatial perception during a Master's Degree at Cardiff in 2003. She emphasises that her work explores ways in which spaces within the landscape appear altered depending on everchanging colours. Her vessels are of exceptional quality and each piece makes an impact on the viewer. Time spent with Sara's work is an antidote to grey days and life's pressures.

Yo Thom and Debbie Barber

1 - 28 September 2022. Bevere has another splendid group of Yo Thom's ceramics. If you have not seen Yo's pieces before, then a treat is awaiting you. Her Japanese heritage is self-evident but her finely made, monochrome pieces have a strong contemporary

CONTINUED OVER THE PAGE

Canaletto

A VENETIAN'S VIEW

1 OCT 2022 — 7 JAN 2023

WORCESTER CITY ART GALLERY AND MUSEUM

For the first time, Worcester City Art Gallery & Museum are celebrating the wonderful work of Canaletto, featuring stunning paintings on loan from the Woburn Abbey Collection together with artworks from Worcester's Fine Art Collection.

For more information on opening times and admission prices please visit:

www.museumsworcestershire.org.uk



WOBURN

Art Fund

THE CELMLEY FOUNDATION

MUSEUMS
WORCESTERSHIRE
Art • Heritage • Events



Michele Bianco, Bronwen Grieves and Kim Colebrook
29 September - 2 November 2022

feel, often with intricate incised decoration. She particularly enjoys the creative freedom in the UK in contrast with her home country: that freedom manifests itself with every group of her pieces which Bevere has been privileged to show. Debbie Barber is a ceramic artist who specialises in raku and smoke fired ceramics. She works from her home studio in rural Leicestershire. Her art and design training was in textile decoration and embroidery. After ten years, she changed direction and returned to college to train as a potter. She retains her textile influences, which can be seen in her patterns and use of colour. She specialises in naked raku and sawdust firing techniques. Her ceramics are highly decorative, demonstrating a love of pattern. Bowls, open forms and small sculptural pieces are slip cast, hand-built or thrown.

Michele Bianco, Bronwen Grieves and Kim Colebrook
29 September - 2 November 2022. Michele Bianco is another new exhibitor at Bevere. Like so many artists, she is inspired by the natural world and this is manifest in the shaping and design of her work. She works with a range of stoneware clays and enjoys the way the forms she builds are affected by the structure of the clays. Her hand-built pieces use the full range of techniques – pinching, coiling and slab-building. As her work dries, she carves the clay to produce the textures and shaping which make her work so attractive. Bronwen Grieves is a ceramic sculptress whose work is instantly recognisable. Her monochrome pieces are abstract in design, compact yet expressive. The Bevere Gallery enjoys showing her work because of the presence each piece carries and the sheer quirkiness of her creative thinking. Makers who prefer monochrome decoration often place strong emphasis on the impact of shape and form, and this work will draw your attention from the outset. After a career in the tourism and heritage sector, Kim Colebrook discovered a passion for ceramics. She works in porcelain along with iron-based oxides and, in her own words, 'integrates narratives about people history and geology'. Since appearing in a Graduate Show at Bevere in 2018 her work has never been out of the Gallery.

BIRMINGHAM BACH CHOIR

www.birmingham.bachchoir.com

J S Bach: Christmas Oratorio

Saturday 19 November 2022, 7pm at Lichfield Cathedral. Birmingham Bach Choir perform parts 1, 2 3 & 6 of this magnificent work in the wonderful setting of Lichfield Cathedral with a top-class line up of orchestra and soloists. Conductor: Paul Spicer. Orchestra: The Musical & Amicable Society (Baroque style). Soloists: Sofia Larsson, James Laing, Danial Auchincloss, & Ashley Riches. Evangelist: Thomas Hobbs. Tickets: £15 - £32

Service of Nine Lessons & Carols

Sunday 18 December 2022, 3.30pm at St Albans, Birmingham, B12 0YH. This traditional service of readings, congregational carols and beautiful music performed by Birmingham Bach Choir, will be held again in the atmospheric Grade II listed church of St Alban the Martyr just outside the city centre. All are welcome. Free event.

HERBERT ART GALLERY & MUSEUM

Jordan Well, Coventry, CV1 5QP. theherbert.org

Grown Up in Britain: 100 Years of Teenage Kicks

Until 12 February 2023. 'Grown Up in Britain: 100 Years of Teenage Kicks' is a major exhibition which has been curated by the London based Museum of Youth Culture and is a celebration of teenage life from the roaring 1920s until today. Going beyond the headlines, the exhibition chronicles the lived experiences and impact of young people, their scenes, sounds and styles, through photographs, objects and personal stories - depicting teenage life in the UK over the last century. Inside the exhibition visitors will be transported to their teenage years through a variety of immersive sections which portray home life and teenage bedrooms, first jobs and nights out, hang out spots and 'must-have' items. Iconic photographs line the walls and set the scene – some by well-known artists such as the godfather of Black British photography Vanley Burke, Ken Russell, Normski, Anita Corbin, Gavin Watson and Lucy McCarthy, as well as nostalgic images submitted from family albums across the country. Objects on display include a Royal Enfield Constellation motorcycle as pictured on the cover of the 'Daily Mirror Shock' Issue in 1961, a 1920s flapper dress, Chopper bicycle, ZX Spectrum console, band tees, fanzines and much more. The exhibition culminates with an immersive area where people can submit their own memories digitally via museumofyouthculture.com/submit.

'Grown Up in Britain' is the Museum of Youth Culture's first major exhibition outside of London on the lead up to the opening of their permanent home in Digbeth, Birmingham in 2025. As the show is taking place in Coventry, several 'show & tell' events took place locally to ensure the memories, objects and photographs of Coventrians were captured and reflected in the final exhibition.

IKON

1 Oozells Square, Brindleyplace, Birmingham, B1 2HS.

www.ikon-gallery.org

Mayunkiki

9 September - 13 November 2022. A rare exhibition of work by Japanese Ainu artist Mayunkiki, comprising video installation that conveys aspects of the everyday life of her people, the Indigenous inhabitants of Hokkaido.

CONTINUED OVER THE PAGE



J.S. BACH – CHRISTMAS ORATORIO, PARTS 1, 3, 5, 6 BWV 248

30th November 7.30pm | Malvern Theatres

6th December 7.30pm | Collegiate Church of St Mary, Warwick

Tickets: www.armonico.org.uk



The Christmas Oratorio is a collection of cantatas for the Christmas season which celebrates Bach bouncing from his genius in writing intensely beautiful melody and counterpoint to flamboyant writing for orchestra with fanfare like trumpets and drums, including some of the most virtuosic trumpet writing in history! It is impossible not to feel uplifted by these fabulous works.

ARMONICO CONSORT AND BAROQUE PLAYERS

DIRECTOR | CHRISTOPHER MONKS

CAROLS BY CANDLELIGHT

19th December 7.30pm | Collegiate Church of St Mary, Warwick

Tickets: www.armonico.org.uk

This performance is generously supported by David Phillips MBE & Phillips and Becker Accountants Ltd. Join us for our traditional carols concert in the sublime candlelit setting of St Mary's in Warwick for a feast of carols, both traditional and new in what has become the perfect way to begin the Christmas season.

ARMONICO CONSORT

DIRECTOR | CHRISTOPHER MONKS

AC ACADEMY WARWICK

20
ARMONICO
CONSORT
YEARS
A Singing Legacy

www.armonico.org.uk

Registered Charity No. 1103159



"Pure Pleasure"
THE GUARDIAN

☆☆☆☆
THE TIMES

☆☆☆☆
THE INDEPENDENT

☆☆☆☆
BBC MUSIC MAGAZINE

A MAGICAL PANTOMIME ADVENTURE

MONDAY 5th – SATURDAY 31st DECEMBER 2022

From 90's Boy Band 911

LEE BRENNAN

Hilarious Impressionist
ANDREW FLEMING

He's Back!
SIMON HOWE



Tickets from £17 – £28.50
BOX OFFICE 01527 65203

BOOK NOW IT WOULD BE BEASTLY TO MISS OUT!

Under Pressure 2



'The Globe' – a mezzotint by Roger Harris RE

An exhibition of original prints
by eleven respected
UK Printmakers

17 September – 29 October 2022

Collagraphs
Lithographs
Mezzotints
Screenprints

Bevere Gallery, WR3 7RQ
beveregallery.com
01905 754484



in association with



Like many 'First Nation' populations, for too long the Ainu have suffered systematic marginalisation by a central government and Mayunkiki is especially concerned to raise the profile of their traditional culture, including tattooing (Sinuye) and music (Upopo). This exhibition follows a number by Ikon featuring Indigenous women artists, including Meryl McMaster (Canada), Judy Watson and Yhonnie Scarce (Australia) and Britta Marakatt-Labba (Sweden).

Edward Lear: Moment to Moment

9 September - 13 November 2022. Edward Lear (1812 – 1888) is known around the world as a prolific nonsense poet, especially as the author of 'The Owl and The Pussy-Cat' and many other limericks and songs. However, his first love was drawing and painting and over a period of fifty years he travelled in Europe, the Middle East, India and beyond, producing thousands of pictures. Ikon's exhibition is the first solely devoted to Lear's sketches and landscape drawings from across the entire span of his career.

This show examines the artist's fascination with the creative process and is especially concerned with how his work came into being – through experimental methods of composition, successive drafts, doodlings and written marginalia. It also offers a study of the momentary and explores how Lear's sense of the present was shot through and saturated by other moments.

The exhibition features approximately 60 works by Lear, many never shown before in public, and draws on collections in both the US and the UK. It is co-curated by Matthew Bevis, Professor in English Literature, University of Oxford and Jonathan Watkins, Ikon Director.

INTERNATIONAL FESTIVAL OF GLASS

26 - 29 August 2022. Venues across the historic Stourbridge Glass Quarter and Wolverhampton, West Midlands. www.ifg.org.uk

Four days showcasing the dynamic world of glassmaking by the world's greatest glass artists with high-quality exhibitions, international masterclasses, artist demonstrations and presentations, including the flagship British Glass Biennale exhibition.

The International Festival of Glass is the only festival that celebrates glass in the UK. Since its inception in 2004 the Festival's aim has been to celebrate and showcase the skill and innovation of the glass industry and makers, both historic and contemporary, local and international. This year we also join glass organisations worldwide for the UN International Year of Glass 2022 and explore how this amazing material has changed our lives for the better.

The creative programme of activities combines the whole spectrum of glassmaking with other artforms to push boundaries and develop new opportunities, ideas and collaborations for makers, artists and performers. You can see high-quality exhibitions, international masterclasses, artist demonstrations and presentations with over 500 artists represented at each festival. There are plenty of workshops and hands-on activities to try yourself, plus lively entertainment and evening events.

The theme for 2022 is 'Expanding Horizons: Contemporary Glass and Culture from Japan, Korea, China and Taiwan'. This year the festival will explore glassmaking in East Asia and introduce top artists and exquisite artwork, with the first major international exhibition and a fabulous fashion show featuring traditional and contemporary hanbok (Korean costume) combined with stunning glass jewellery.



International Festival of Glass
26 - 29 August 2022

MIDLANDS ARTS CENTRE – MAC

Cannon Hill Park, Birmingham B12 9QH
macbirmingham.co.uk

Adeela Suleman: Allegory of War
Until 9 October 2022

First Floor Gallery, Tuesday - Sunday, 11am - 5pm. Internationally acclaimed artist Adeela Suleman is known for her works exploring social and political issues, particularly the links between historic and contemporary violence experienced in her home city Karachi, Pakistan. This will be her most comprehensive solo exhibition at a public gallery in the UK.

Suleman employs recurring motifs such as organic subjects including birds and flowers to form detailed, repetitive patterns, referencing the decorative traditions of the Mughal style. The exhibition will feature a selection of works including film projections, metal repoussé work, ceramic plates, intricate applique and installation.

Many of the works focus on the systematic violence experienced daily in Karachi, where up to 12 people per day are murdered in gang-related or political attacks. Her work acts as a memorial to the victims, but also an interrogation of the juxtapositions of art and beauty, creativity and destruction. Suleman writes: 'Violence is the most destructive activity known to humanity. In order to understand it, artists have, throughout history, merged colours, textures and patterns to depict wartime beliefs and ideologies, practices, symbols and values. Their work investigates not only artistic responses to terror but the meaning of violence itself.'

Bristol Archives: Empire through the Lens

Until 11 September 2022. Arena Gallery, Tuesday - Sunday, 11am - 5pm. This exhibition contains photographs, objects and films from the British Empire and Commonwealth Collection based at Bristol Archives. It offers a multi-faceted look at the former British Empire,

CONTINUED OVER THE PAGE

Explore Tudor heritage in historic Bournville

**SELLY
MANOR**  MUSEUM



Events • Family Activities • Weddings • Functions • Tours
www.sellymanormuseum.org.uk

J S BACH *Christmas Overture*

BIRMINGHAM
BACH
 30 YEARS
 PAUL SPICER
Choir
 Inspiring Performances

Saturday 19 November 7pm
 Lichfield Cathedral

Birmingham Bach Choir

Conductor: Paul Spicer

Orchestra: The Musical & Amicable Society

Soloists: Sofia Larsson,
 James Laing, Daniel Auchincloss & Ashley Riches

Evangelist: Thomas Hobbs

Tickets from £15 to £32 (students £10)



www.birmingham.bachchoir.com



DÜRER: The Making of a Renaissance Master – Until 25 September 2022
 'The Bath House' by Albrecht Dürer: Royal Collection Trust / © Her Majesty Queen Elizabeth II, 2022

the Commonwealth and its impacts on people today, through a unique selection of still and moving images selected by members of the community, historians and academics. These objects feature alongside new contemporary commissions by Birmingham-based artists. Prompting debates about decolonisation of culture and the UK's relationships with the rest of the world, this is a timely subject matter for audiences.

The pieces on display were selected by 26 people, each of whom were invited by Bristol Archives to choose one image. The selectors included development workers, artists, photographers, historians and relatives of the photographers. They each bring a different perspective to the collection, and represent a broad range of personal knowledge, aesthetic appreciation and academic thought on the people and countries shown in the images, the legacy of Empire and the post-colonial experience.

RBSA GALLERY

4 Brook Street, St. Paul's Square, Birmingham, B3 1SA
www.rbsa.org.uk

Women Artists of the RBSA, 1884 – 2012

Until Saturday 27 August 2022. This exhibition celebrates the 70th anniversary of the election of the first woman Member and Vice President of the RBSA, Teresa Clarke in 1952 (for more information see page 20-21).

Summer Workshops

Until Saturday 27 August 2022. Looking for something creative to keep you busy this Summer? The RBSA has a fantastic, varied

programme of workshops. These friendly, artist-led workshops cater to a range of abilities and are a fun way to learn new skills.

RBSA Prize Exhibition

Thursday 15 September – Saturday 15 October 2022. The RBSA annual Prize exhibition supports artists and provides the opportunity for them to exhibit their artwork and be rewarded for their talents. The top prize is £1000, second prize is £500, and several more cash and gift prizes are to be won. This year's exhibition will be selected by: Peter Bonnell, Arts Programme Manager of QUAD & FORMAT, Rebecca Court, Course Director BA (Hons) Fine Art at Birmingham School of Art and Diana Ali, Visual Artist & International Curator & Lecturer.

WORCESTER CITY ART GALLERY AND MUSEUM

Foregate Street, Worcester WR1 1DT
www.museumsworcestershire.org.uk

Canaletto: A Venetian's View

1 October 2022 – 7 January 2023. Monday to Saturday: 10.30am – 4.30pm. Ticket prices: Standard: £8; Worcester residents: £4; Children up to 16: FREE; Worcester City Art Gallery & Museum Members: FREE; Art Fund Members: £4. 'Canaletto: A Venetian's View' will celebrate the wonderful work of Canaletto, featuring stunning paintings on loan from Woburn Abbey, Birmingham Museums, Tate and Compton Verney, together with artworks from Worcester's Fine Art Collection. For more information see page 13.

60 YEARS OF EXHIBITIONS



A History of MAC in 60 Objects

Sat 3 September – Sun 6 November

macbirmingham.co.uk



Supported using public funding by
ARTS COUNCIL
ENGLAND



CASTLE BROMWICH HISTORIC GARDENS

An oasis of green calm and lively culture.

Early 18th century countryside on the edge of a 21st century city. 10-acres of Grade II* listed walled garden + 30 acres of Historic Parkland Nature Reserve.



Family events



Theatre/Music



Café



Venue hire

WWW.CASTLEBROMWICHHALLGARDENS.ORG



Castle Bromwich
Historic Gardens





1



2



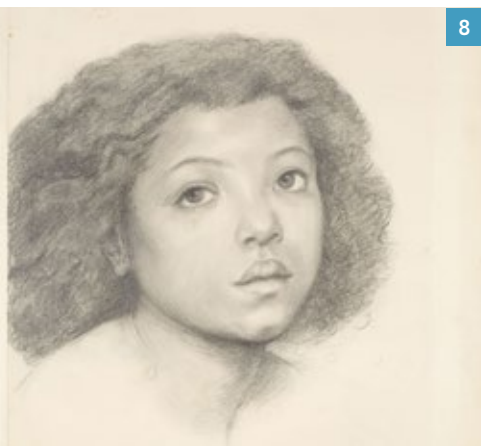
3



5



6



8



9



10

FRIENDS' QUIZ

BY JIM WELLS



- In which ancient Worcestershire parish, now a Birmingham suburb, would you find this Hall?
a) Kings Norton b) Yardley c) Harborne
- Which gallery has been lent this picture by Birmingham Museums Trust?
- At which Birmingham factory was this famous plane manufactured?
- Oscar Deutsch (born in Balsall Heath) started which famous cinema chain in Birmingham?
- For which artistic skill was Jane Morris, part of the Arts and Craft movement, well known?
- In which Birmingham district can St Peter's, this former teacher training College, still be found?
a) Aston b) Sparkbrook c) Saltley
- Which famous Birmingham night club was based in a former Methodist Church Hall?
- This drawing was a draft by which Pre-Raphaelite painter?
- Which Italian artist produced this work in 1505?
- This watercolour by David Cox is the entrance to a building that started as a parish church and became a cathedral. What is it called?
a) St Chad's b) St Philip's c) St Martin's

1. 'Blakesley Hall' 2. 'Erminia and the Shepherd' by Giovanni Francesco Barbieri, 1619-20, 1962P17
3. 'Photograph Album: WWII Castle Bromwich Aeroplane Factory, Birmingham 1940-46', from an album containing approximately 50 black and white photographs. Including Castle Bromwich Aeroplane Factory, and other factories across the country, during the Second World War, Presented by John Leader, 2015, 2015.14.2 5. 'Jane Morris, seated on divan, Three-quarter length', 1890, photographed by John R Parsons, printed by Sir Emery Walkerine, presented by Robert Steele, 1941, 1941P359.6 6. 'Saltley College, Birmingham', Artist unknown, 1852, 1978V789 8. 'The Beloved - Study for the Black Girl' by Dante Gabriel Rossetti, 1865-66, purchased and presented by subscribers, 1903, 1904P472 9. 'Madonna and Child Enthroned with Saints and Donor' by Giovanni Bellini, 1505, 1977P227 10. 'Porch of St Philip's Cathedral, Birmingham' by David Cox, 1836, Presented by John Feeney in 1904, 1904P557





All photos by Birmingham Museums Trust, licensed under CC0.
To access BMT's Digital Image Resource please visit: dams.birminghammuseums.org.uk

1. Yardley 2. Barber Institute 3. Castle Bromwich 4. Odeon 5. Embroidery 6. Saltley 7. Que 8. Rossetti 9. Bellini 10. St Philip's

AUGUST

-  Wednesday 24 # 'Found Cities, Lost Objects: Women in the City' – Katie Morton
-  Thursday 25 # 'Found Cities, Lost Objects: Women in the City' – Katie Morton



SEPTEMBER

-  Tuesday 13 * Friends' Annual General Meeting
-  Tuesday 13 * 'Thinktank's Planetarium: The Inside Story' – Colin Hutcheson
-  Thursday 15 * Tolkien Walk
-  Wednesday 21 * A conversation with Birmingham Museum Trust's Co-CEOs – Sara Wajid MBE and Zak Mensah
-  Friday 23 - Monday 26 * Friends' International Holiday to Copenhagen


OCTOBER

-  Thursday 6 * The New Art Gallery Walsall
-  Wednesday 12 * 'Something Old, Something New, Something Borrowed, Something Blue' – Jane Howell
-  Friday 21 * 'Something Old, Something New, Something Borrowed, Something Blue' – Jane Howell

NOVEMBER

-  Thursday 10 * Visit to the West Midlands Police Museum
-  Tuesday 15 * 'Evie: a twentieth-century woman' – Henrietta Lockhart at Winterbourne

**DATES FOR YOUR DIARY
DECEMBER**

-  Wednesday 14 ** Christmas Party at Soho House and talk by Dave Symons on 'Matthew Boulton and the Forgers'

- * Details are enclosed with this mailing (see page 6-8).
- # Included in a previous mailing, but places are still available (see page 6-8).
- ** Date for your Diary – information will be included in the Winter 2022 edition of 'Artefacts'

EVENT KEY

ANNUAL EVENT



DAYTIME TALK



EVENING EVENT



GUIDED TOUR



OUTING



SCIENCE SHORT

THE NEXT ISSUE OF ARTEFACTS WILL BE PUBLISHED IN OCTOBER 2022



BLACK COUNTRY BEATS

On until 4 September 2022 - Black Country Beats celebrates the diverse musical genres that emerged from the Black Country between the 1970s and 2000s.



POP TRACKS

On until 29 August - Running alongside our music-themed exhibition Black Country Beats and coinciding with the 2022 Commonwealth Games, which takes place in the Midlands this summer, Pop Tracks showcases pieces from Wolverhampton Art Gallery's Pop Art collection that explore music and sport.

GLAZE

The new eating space at Wolverhampton Art Gallery – A new eating space and a new menu featuring everything from a Full English Breakfast, Porridge, Homemade soup of the day, a variety of sandwiches and jacket potatoes (both with different fillings), to our favourite coffees, new loose leaf teas and delicious handmade cakes. Whatever time of day your visit there's certain to be a treat to tempt you. Special occasion? We also offer Afternoon Tea.



For more information on events and activities taking place at Wolverhampton Art Gallery visit www.wolverhamptonart.org.uk

WOLVERHAMPTON
ARTS & CULTURE

CITY OF
WOLVERHAMPTON
COUNCIL

Supported by
ARTS COUNCIL
ENGLAND